

Great Value Task Seating has a new name, it's called...



Reaping the rewards

When Joy was launched at Design Prima in 2006 it won the FX award for innovation in design in the class of best technical innovation. This was recognition that the Orangebox design team had achieved a new benchmark for task seating.



Effective firms work with healthy and happy staff.

Orangebox provides our customers with products which are designed to satisfy both these needs. As well as looking great and helping to create attractive work environments, Orangebox products are designed to maximise physical and emotional well being and to increase productivity by being comfortable and easy to use.



Orangebox SEED

- S** smart, simple product and procedures
- E** ergonomic / health driven design and build
- E** environmental materials and processes
- D** design led, customer focused solutions

R&D's Product Objectives

- The most refined product in its class
- The most comfortable product in its class
- The best value product in its class
- The most intuitive chair in its class
- Easier to buy and install than any other chair
- The most reliable chair in its class
- Quick and simple to make!





Typically products in this class are constructed utilising factored components sourced globally. Orangebox are one of the few companies in the UK who have the experience and competence to carry out industrial design and engineering inhouse.

We invested heavily in tooling owned by Orangebox to produce parts local to the factory. Stripping out the middle men who supply components to our competitors has produced a chair with features at price points never achieved before. Guarantee of supply and continuity will remain assured.



The chair has been tested to BS 5459 2000 suitable for 150kgs in 24 hour usage.

OPERATOR 1	 ① 60S  ② 60S	2 MINS
OPERATOR 2	 ③ 30S  ④ 45S  ⑤ 45S	2 MINS
OPERATOR 3	 ⑥ 120S	2 MINS
OPERATOR 4	 ⑦ 120S	2 MINS
OPERATOR 5	 ⑧ 10S  ⑨ 20S  ⑩ 30S  ⑪ 30S  ⑫ 30S	2 MINS
OPERATOR 6	 ⑬ 20S  ⑭ 100S	2 MINS

The key to the success of Joy is the design and manufacturing process. Certain key components are fitted using snap fixings, rather than conventional screws and bolts. Thus enabling the speed of assembly and disassembling to be improved greatly.

The balanced production line especially designed for Joy is capable of producing one complete chair every 2 minutes.

Using 6 operatives, best practice manufacturing and line side stocking techniques for components minimises process time and energy waste and also guarantees production quality and consistency.



Contemporary styling with slim seat & back

Replaceable Cushions

Elegant adjustable arms as standard with no visible fasteners & tactile arm pads

Dual contour seat - to enable a more natural upright sitting position.

Elegant base with flowing blend into the castor



Beautiful controls, carefully designed for intuitive position and use

Information graphics printed on all controls

Great ride from a great mech.

2.3 to 1 synchronous ratio
7 to 23 stone tension range
21 degree recline angle
BS 5459 2000 accredited



Back height adjustment integrated into back plastic to reduce back thickness –no unpleasant bulges



Seat depth easily adjustable - works with a spring action to be easily adjusted to enable smooth and easy movement

There's physical ergonomics then there's cognitive ergonomics and Joy aims to deliver both.

With Joy we've combined our core ergonomic principles such as the dual contour seat with some fresh research to establish a contoured back that really hugs the individual through the range of upright sitting to fully reclined. We've also been able to apply the latest in anthropometric research to cater for a broader range of shapes and size so users can tuck themselves firmly into the back of the chair.

are you sitting comfortably?

7



In Summary the core ergonomic features include:

- Task chair conforming to BS EN 1335 part 1 dimensional requirements
- BS EN 9241 and the FIRA Ergonomics Excellence award imminent
- Synchro mechanism as standard
- Easy access operating handles including side tension as standard
- Intuitive graphics on all user interfaces
- Contoured high support back rest as standard
- Detailed easy access operating instructions as standard
- Dual contour seat as standard
- Optional 50 mm seat depth adjustment
- Optional arm pad travel
- Optional arm width travel
- Optional soft touch arm pad
- Option of extra luxury upholstery
- Option of additional lumbar sleeve

Joy Product Options

joy

8



Joy-01 Swivel Chair



Joy-02 Swivel Armchair



Joy-03 Counter Chair



Joy-04 Counter Armchair



Joy-05 Visitor Chair



Joy-06 Visitor Armchair



Joy-07 4 leg Chair



Joy-08 4 leg Armchair



Joy-09 Highback Chair



Joy-10 Highback Armchair



Joy-11 Meshback Chair



Joy-12 Meshback Armchair

- Ticks all the boxes
- Fulfilling the needs of corporate customers
- Visually differentiated from competitor product
- Significantly 'tooled' to ensure great value for money



- Delivered with Orangebox service & quality
- Replacable cushions
- Intuitive user interface
- Achieves BS 5459 2000
- Ergonomic credentials - user instructions

Joy 01 : 02 : 03 : 04 – Standard Task Chairs :

50 mm black nylon castors : 28 mm diameter turret, hooded.

Black nylon base - 26 inch diameter

Black gas lift, 135 mm travel

Synchronous mechanism with side tension adjustment

Black, Polypropylene fixed seat pan assembly (inner and outer) : 450mm x 480mm

Black, high tensile steel arm bar : 60 mm wide x 470 mm long x 6 mm

Black nylon adjustable arm : 70 mm vertical travel over 6 positions

Black nylon arm pad with grey TPE insert (240 mm long x 80 mm wide)

Black Polypropylene chair back assembly (inner and outer) : 520 mm x 450 mm

Ratchet Back Height adjustment mechanism : 70 mm over 6 positions

CHMR foam back cushion - replaceable on site

CHMR foam seat with profiled front zone - replaceable



Optional Upcharges

- 65mm black nylon castors
- Orangebox 26 inch diameter aluminium base – polished, powder coated light grey
- Brushed steel gas lift, 135 mm travel
- Sliding seat : 50 mm travel over 6 positions
- Sliding arm pads : 50 mm rearward travel
- Soft Black PU armpad
- Width adjustable arms
- Upholstered back shell (fabric only)
- Two tone upholstery
- Luxury upholstery with profiled stitch detail on back cover



Joy 07 & 08 – 4 leg chair and 4 leg Armchair

Glides: Self leveling glides - choice of standard, non-slip or felt glide pads as a no cost option.

Base / Frame: The visitor frame is black as standard with light grey & dark grey available at no extra cost - chrome available as an upcharge.

Shells: The seat & back shells are plain as standard with an option to upholster the back shell as an upcharge (fabric only).

Upholstery: Two tone upholstery is available as an optional upcharge (seat & back cushions) & the higher band will be the base retail. If two tone upholstery & upholstered back shell are picked, the back shell will be the same colour as the back cushion.

Luxury Upholstery: is standard on leather chairs and as an option (on fabric chairs) - this will include 'Joy profile' stitch detail.

Options – visitor chairs

- Two tone Upholstery
- Black PU Armpads
- Chrome Frame
- Luxury Upholstery
- Upholstered Shell



Joy 05 : 06 – Standard Visitor Chairs :

22mm diameter tensile steel tubing chair frame, RAL 9006 (powder coated)

Polypropylene fixed seat pan assembly, black (inner and outer) : 450 x 480

Polypropylene chair back assembly, black (inner and outer) : 520 mm x 450 mm

CHMR foam back cushion - replaceable

CHMR foam seat with profiled front zone – replaceable

Black nylon arm support and pad (on Joy06) with grey TPE insert (240 mm x 80 mm)

Armed and armless chairs stack 3 high



Options – visitor chairs

- Upholstered back shell (fabric only)
- Two tone upholstery
- Luxury upholstery with profiled stitch detail on back cover
- Soft Black PU armpad
- Black (powder coated) visitor chair frame
- Chrome visitor chair frame



Joy 09 & 10 High back task chair / armchair

Castors / Glides: 50mm castors fitted as standard on standard height chairs with 65mm Black Castors / Standard Glides fitted as an upcharge.

Base / Frame: A black nylon base is fitted as standard on swivel chairs with polished / light or dark grey aluminium available as an upcharge. The visitor frame is black as standard with light grey & dark grey available at no extra cost - chrome available as an upcharge.

Gaslift: black gaslift fitted as standard with a brushed chrome gas lift on all metal bases.

Extra Height Gaslift: On counter chairs will be black and the footring has a black metal body (powder coated) with a chrome foot rail.

Arms: Adjustable arms with fixed pads are fitted as standard on swivel armchairs.

Seat: A fixed seat as standard with a sliding seat available as an upcharge.

Shells: The seat & back shells are plain as standard with an option to upholster the back shell as an upcharge (fabric only).

Upholstery: Two tone upholstery is available as an optional upcharge. If two tone upholstery & upholstered back shell are picked, the back shell will be the same colour as the back cushion.

Luxury Upholstery: is standard on leather chairs and as an option is available on fabric chairs - this will include 'Joy profile' stitch detail.

Options – visitor chairs

- Sliding Seat
- Sliding Armpads
- Width adjusted arms
- Black PU Armpads
- Polished aluminium base
- Light or dark grey aluminium base
- Glides
- 65mm black castors
- Two tone upholstery
- Luxury Upholstery
- Coathanger RAL 9006
- Coathanger 812 dark greys
- Coathanger Chrome



Joy 11 & 12 Mesh Back task chair / armchair

Castors / Glides: 50mm castors fitted as standard on standard height chairs. Glides will be fitted as standard on counter chairs.

Base / Frame: A black nylon base is fitted as standard on swivel chairs.

Gaslift: On standard height chairs, a black gaslift is fitted on a black base with a brushed chrome gas lift fitted on aluminium bases.

Arms: 2D adjustable arms with fixed pads are fitted as standard on swivel armchairs.

Seat: A fixed seat as standard with a sliding seat available as an upcharge.

Shells: The seat & back shells are plain as standard.

Mesh: Black mesh is supplied as standard with coloured options available as a no cost upcharge.

Luxury Upholstery: is standard on leather & vinyl chairs.

Mesh Colour Options: Black mesh is supplied as standard with coloured options available as a no cost upcharge.

Options – visitor chairs

- Sliding Seat
- Sliding Arms pads (not available on standard arm on Joy-12)
- Width Adjustable arms
- Black PU armpads
- Polished Aluminium base
- Light or dark grey aluminium base
- Glides
- 65mm black castors (nylon base only)
- Luxury Upholstery (fabric only)
- Upholstered back shell (fabric only)
- Coathanger
- Black/RAL 9006/812/813
- Coathanger chrome
- Lumbar Vest with inflatable lumbar JOYHB-LITE LS



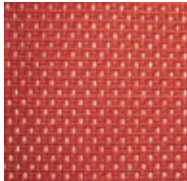
Joy Mesh Technical Information

- The back uses dual tension mesh for firmer back support in the lumbar region.
- High tensile steel & nylon back frame provides both strength as well as a comfortable level of flex in the back.
- The breathability of the mesh back makes long term sitting more comfortable as the user will experience less build up of heat.
- The mesh is produced from polyester which is 100% recyclable.

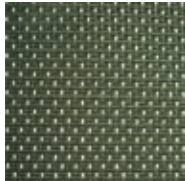
BLACK



FIRE RED



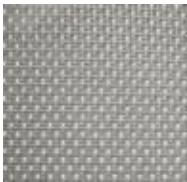
MOSS



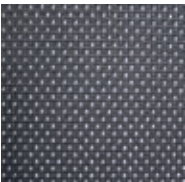
MUSHROOM



STONE



SLATE



Test Certificate

This certificate confirms that the

JOY TASK CHAIR – WITH ARMS

Manufactured by

ORANGEBOX LTD

has been tested at FIRA International Limited and successfully satisfied the applicable test requirements from:

BS 5459-2: 2000

According to the Standard the Joy Task Chair – with arms is therefore considered to be structurally suitable and sufficiently stable for use as an office work chair for 24 hour use and by persons weighing up to 100 kg.

Report reference: TSSEF07971/C refers

SIGNATURE: Phil Reynolds
POSITION: Testing Manager

CERTIFICATE DATE: 03 May 2006

For and on behalf of FIRA INTERNATIONAL LIMITED

This certificate only relates to the sample(s) supplied and tested at the time. Re-testing at intervals is recommended and should be subject to agreement between the supplier and the purchaser.

FIRA International Ltd | Ravenhill Road, Stevenage, Hertfordshire SG1 2JH, England

Test Certificate

This certificate confirms that the

JOY TASK CHAIR – WITHOUT ARMS

Manufactured by

ORANGEBOX LTD

has been tested at FIRA International Limited and successfully satisfied the applicable test requirements from:

BS 5459-2: 2000

According to the Standard the Joy Task Chair – without arms is therefore considered to be structurally suitable and sufficiently stable for use as an office work chair for 24 hour use and by persons weighing up to 100 kg.

Report reference: TSSEF07971/B refers

SIGNATURE: Phil Reynolds
POSITION: Testing Manager

CERTIFICATE DATE: 10 May 2006

For and on behalf of FIRA INTERNATIONAL LIMITED

This certificate only relates to the sample(s) supplied and tested at the time. Re-testing at intervals is recommended and should be subject to agreement between the supplier and the purchaser.

FIRA International Ltd | Ravenhill Road, Stevenage, Hertfordshire SG1 2JH, England

Test Certificate

This certificate confirms that the

RD04 TASK CHAIR – WITHOUT ARMS

Manufactured by

ORANGEBOX LTD

has been tested at FIRA International Limited and successfully satisfied the applicable test requirements from:

BS EN 1335-2: 2000

Based on the test methods contained within

BS EN 1335-2: 2000

According to the Standard the RD04 Task Chair – without arms is therefore considered to be structurally suitable and sufficiently stable for use as an office work chair for 8 hour use and by persons weighing up to 110 kg.

Report reference: TSSEF07971 refers

SIGNATURE: Phil Reynolds
POSITION: Testing Manager

CERTIFICATE DATE: 13 February 2006

For and on behalf of FIRA INTERNATIONAL LIMITED

This certificate only relates to the sample(s) supplied and tested at the time. Re-testing at intervals is recommended and should be subject to agreement between the supplier and the purchaser.

FIRA International Ltd | Ravenhill Road, Stevenage, Hertfordshire SG1 2JH, England

Test Certificate

Certificate of Conformance

ERGONOMICS UNIT

This certificate confirms that the

JOY Swivel Task armchair

manufactured by

ORANGEBOX

conforms with the BS EN ISO 9241, 1996: Ergonomic requirements for office work with visual display terminals (VDTs); Part 5: Workstation layout and postural requirements, which replaced the BS 1179 Part 5 in June 1999.

This summary certificate is based on evidence of satisfactorily passing the tests required by the British standards referred to in the BS EN ISO 9241, Part 5 and additional ergonomics testing and evaluation carried out by FIRA.

JOY swivel task chair is considered to be capable of meeting the minimum requirements as stated in the Annex of the European Commission's Display Screen Equipment (DSE) Directive (90/269/EEC) and the minimum requirements as stated in the Schedule of the Health and Safety Display Screen Equipment Regulations, 1992. Therefore, JOY range of chairs is suitable for use at the DSE workstations.

SIGNATURE: Levent Caglar, Senior Ergonomist

CERTIFICATE DATE: 25 April 2006

EXPIRY DATE: 24 April 2009

For and on behalf of FIRA INTERNATIONAL Limited

FIRA International Limited | Ravenhill Road, Stevenage, Hertfordshire SG1 2JH, England



Orangebox has teamed up with Climate Care, an organisation that reduces greenhouse gas emissions and now offers Joy as a Carbon-offset product when specified in the Camira Oxygen Fabric.

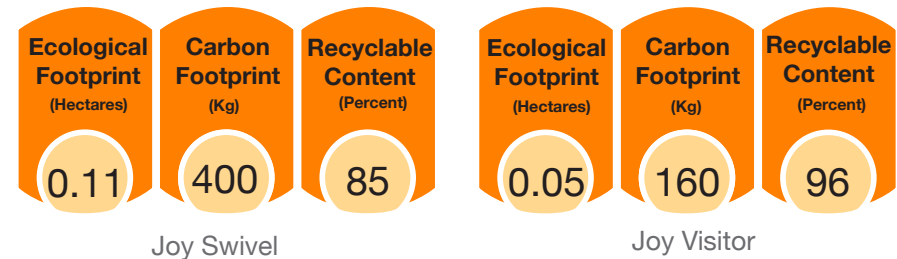
Key Environmental Facts

- 90%+ recyclable
- Upholstered using solvent-free adhesives
- Use of fabric like Interface Marathon means the upholstery is 100% recyclable and uses non-metallic dyestuffs
- All foams are CFC-free
- Cushions are replaceable which extends the lifecycle of the product.
- All component packaging is either returnable or recycled.
- All transit packaging is recyclable
- All tooled components are labelled for material content.

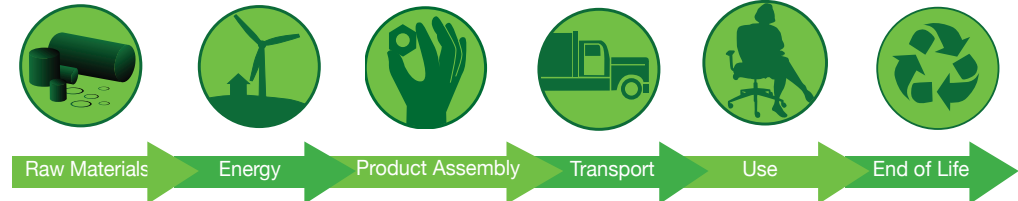
a sustainable design

17

Environmental Data



Life-cycle Breakdown

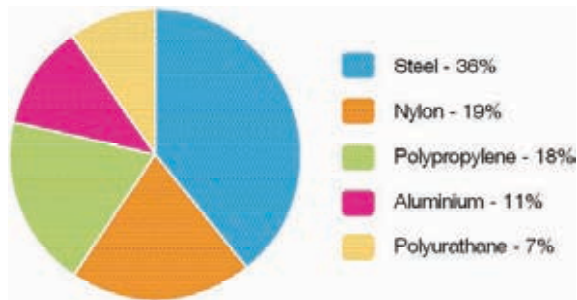


Best Foot Forward
Striving to leave a better world behind

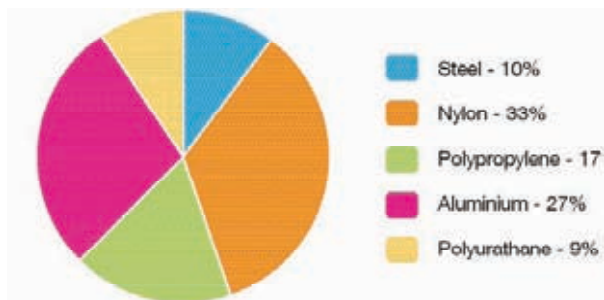
Orangebox's Footprints were calculated by Best Foot Forward (www.bestfootforward.com), who are recognised experts in this field and in 2005 won the Queens Award for sustainability. The technique of Ecological footprint analysis co-originated in the 1990's by Professor William Rees and Dr Mathis Wackernagel.

Materials Breakdown

Our footprint analysis indicates that over 90% of the products environmental impact is down to the raw materials selected. By understanding the footprint of different materials, we can make better decisions on materials selection for forthcoming products.



Joy Key Materials
by Weight



Joy Materials by
Footprint

Eco Credentials

96% Recyclable (visitor),

85% recyclable (swivel)

75% of Orangebox Materials
supplied from the UK

50% Returnable Packaging
used between Orangebox and its suppliers

CFC & HCFC Free

foams used in upholstery

Solvent Free adhesives

used in manufacture

100% Renewable Electricity

used for product manufacture

Climate Neutral

when specified in Camira "Oxygen" Fabric

On...and on..and on....

Lifecycle extension - replaceable cushions

BS EN ISO 14001

Orangebox were the first Seating company
to achieve this standard in the UK